

# **Task 5: DPS Deploy Prototype**

**Michael Orosz and Tanya Ryutov, USC-ISI**

**Milind Tambe, USC**

**Heather Rosoff, USC**

**Richard John, USC**

**Isaac Maya, USC**



# DPS Deploy Prototype

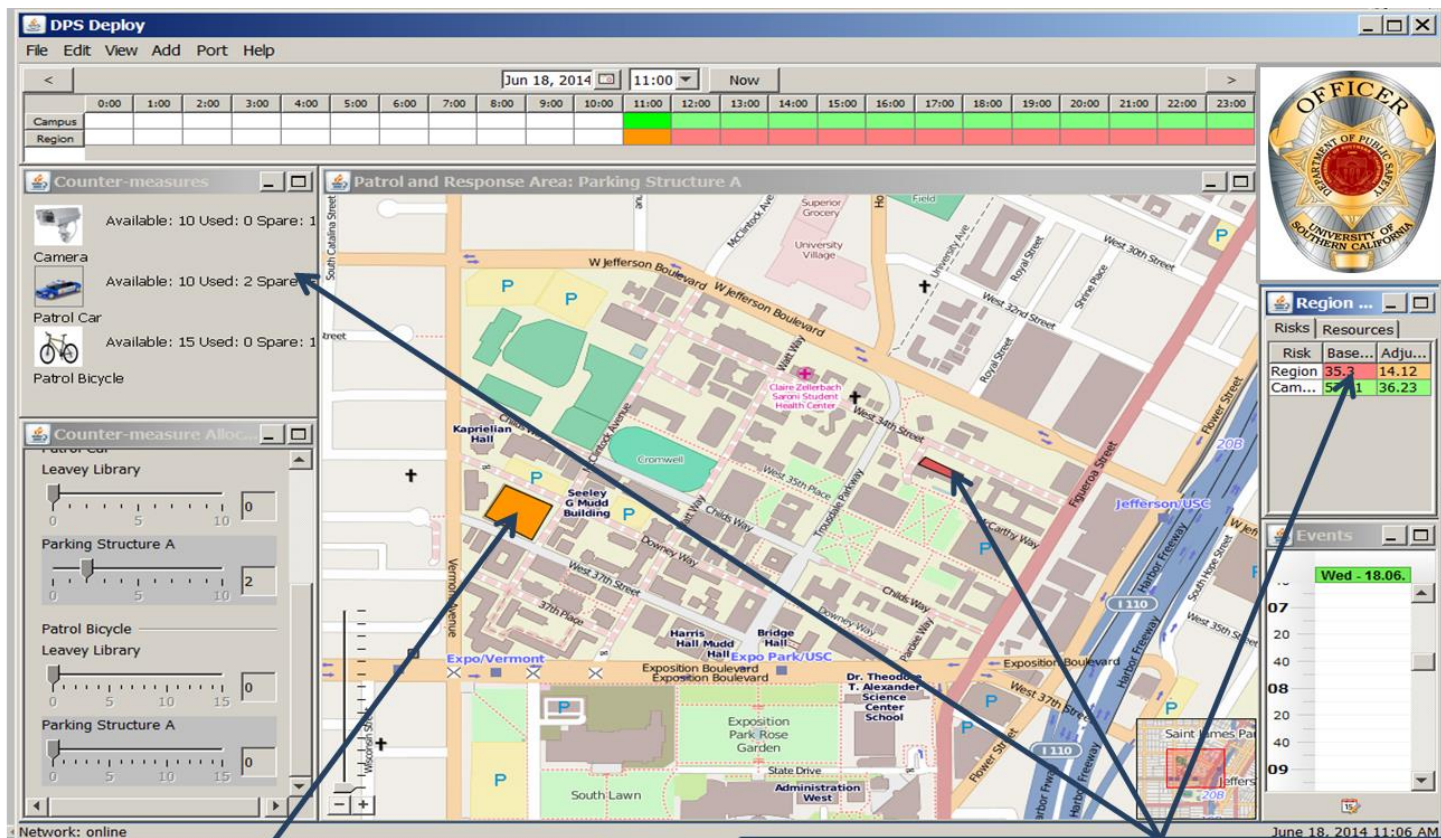
- Issues with current COMPSTAT approach:
  1. Current deployment of law enforcement resources can leave other areas exposed and vulnerable to criminal activity
  2. Adversaries can observe law enforcement deployments and adjust tactics
- We will develop a proof-of-concept prototype DPS\_DEPLOY system that provides the following capabilities:
  - Geospatially displays current and past criminal activities based on type: infractions, misdemeanors and felonies
  - Shows areas of high/low risk of criminal activity based on historical criminal campus and community behavior patterns/trends
  - Risk calculations will be based on a simple (made-up) set of behavior rules



# DPS Deploy Prototype GUI

We will adapt the current InfraSec platform to support DPS\_DEPLOY

- InfraSec visually displays real-time risk associated with monitored assets and the change in risk associated with relocating assets



Based on historical behavior patterns/trends, DPS\_DEPLOY shows areas of high/low risk of criminal activity.

Set of behavior rules (e.g., IF area has no DPS coverage THEN risk is high for a bike theft, IF area has one DPS resource deployed THEN risk is medium for a laptop theft, etc.).

# DPS Deploy Prototype Tasks & Milestones

- Tasks:
  1. Develop the interfaces between InfraSec and the current crime/dispatch tracking systems available at DPS
  2. Modify the InfraSec platform to support the DPS patrol area – USC campus and adjacent areas
  3. Develop a criminal behavior simple rule table
  4. Integrate and test the first prototype
- Major Milestones:
  1. 30 August 2014 : Working DPS\_DEPLOY prototype 0.5
  2. 30 November 2014 : DPS\_DEPLOY 1.0 installed in USC DPS for evaluation
- Future Goal: Integrate system into existing GPS system used by DPS; Integrate additional technologies from USC CREATE